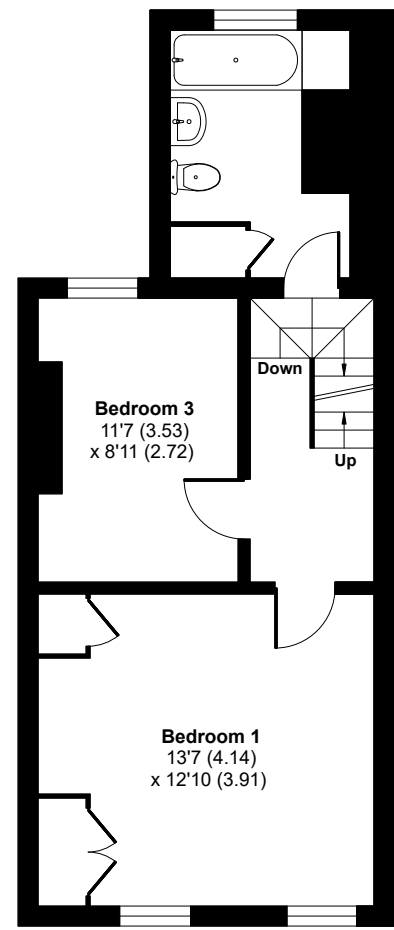
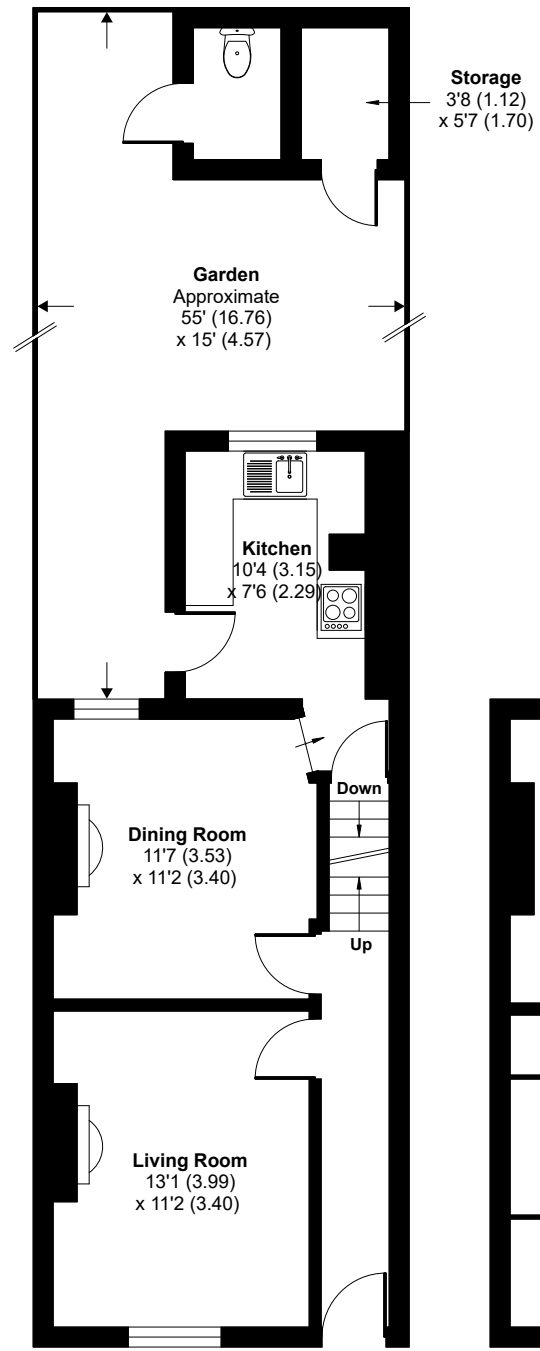
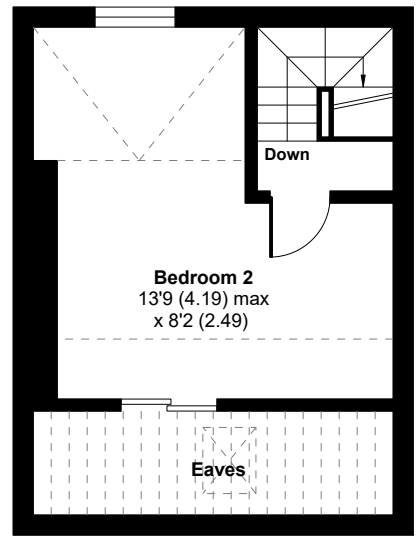
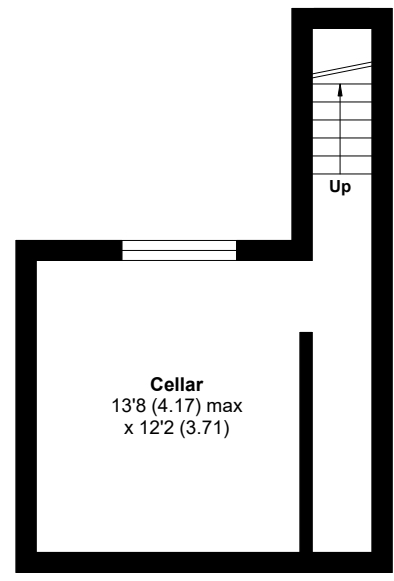


Welsh Walls, Oswestry, SY11

Approximate Area = 1211 sq ft / 112.5 sq m
 Limited Use Area(s) = 157 sq ft / 14.5 sq m
 Outbuilding = 40 sq ft / 3.7 sq m
 Total = 1408 sq ft / 130.7 sq m
 For identification only - Not to scale



Denotes restricted head height



LOWER GROUND FLOOR

GROUND FLOOR

FIRST FLOOR

SECOND FLOOR



Floor plan produced in accordance with RICS Property Measurement Standards incorporating International Property Measurement Standards (IPMS2 Residential). © n1che.com 2024. Produced for Daniel James Residential. REF: 1190573